

Area Safe Products Matting, Ramps & Tactiles CATALOGUE

40



→ Customer Focused

→ Speedy Service

→ Innovative Products



2025
Edition

phone 1300 613 880

Web www.areasafe.com.au

Email sales@areasafe.com.au



Why Choose Area Safe Products?

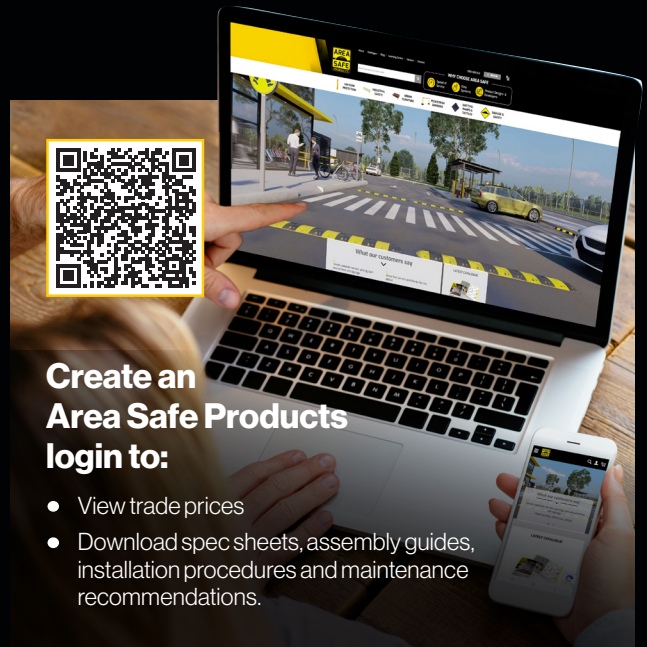
Customer Focused



Speedy Service



Innovative Products



Create an Area Safe Products login to:

- View trade prices
- Download spec sheets, assembly guides, installation procedures and maintenance recommendations.

Contact us

Email: sales@areasafe.com.au
Web: www.areasafe.com.au
Mail: PO Box 82, Plumpton NSW 2761

Address: Sydney: 17 Sterling Road, Minchinbury, NSW 2770 (Head Office, Warehouse & Production)

Melbourne: Suite 208/15 Cochranes Road, Moorabbin VIC 3189 (Office only)

Brisbane: Level 11, Suite 5, 88 Tribune Street, South Brisbane QLD 4101 (Office only)

Open: 7:00am - 5:00pm, Monday-Friday

ABN: 74 114 414 185

Phone: 1300 613 880

All prices advertised through this catalogue exclude 10% GST. Design & prices subject to change without notice. E&OE © 2024 Area Safe Products Pty Ltd.



Contents

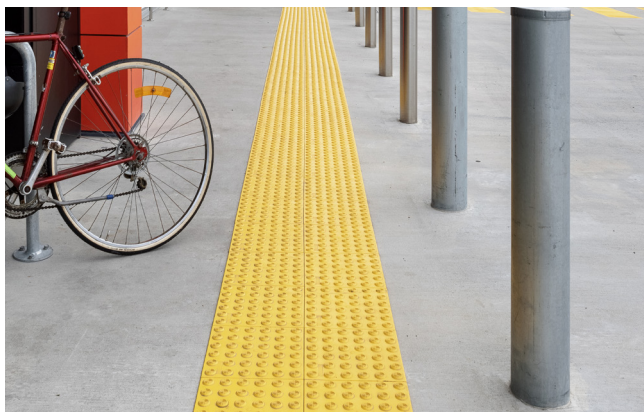
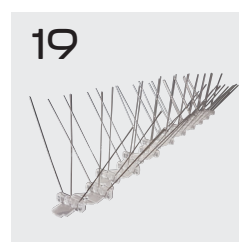
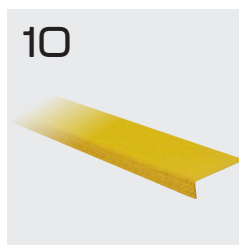
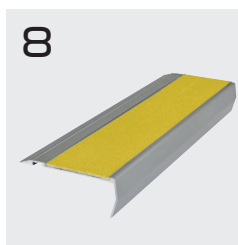
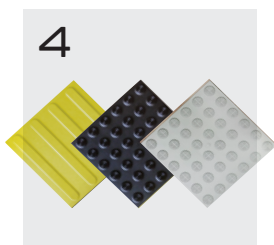
Matting, Ramps & Tactiles products

AREA SAFE
PRODUCTS

OCTOBER
2025

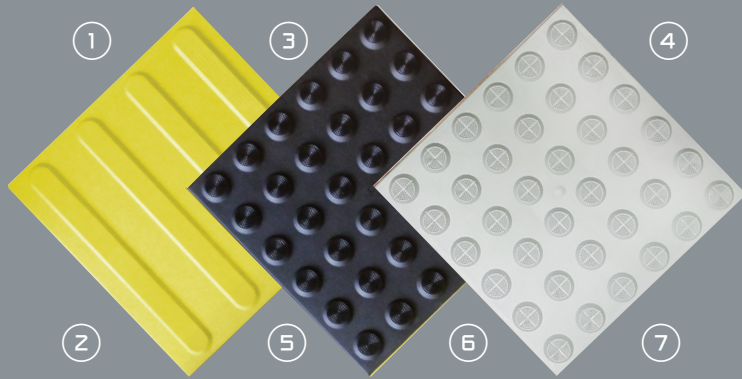
SPECIALITY
CATALOGUE #40

Tactile Indicators	4	Kerb Ramps	15
Stair Nosing	8	Cable Covers	16
Anti-Slip Nosing, Plates & Tapes	10	Pedestrian Cable Covers	17
Ramps and Trench Covers	11	Skate Deterrents	18
Entrance Matting	12	Bird Spikes & Umbrella Wrappers	19

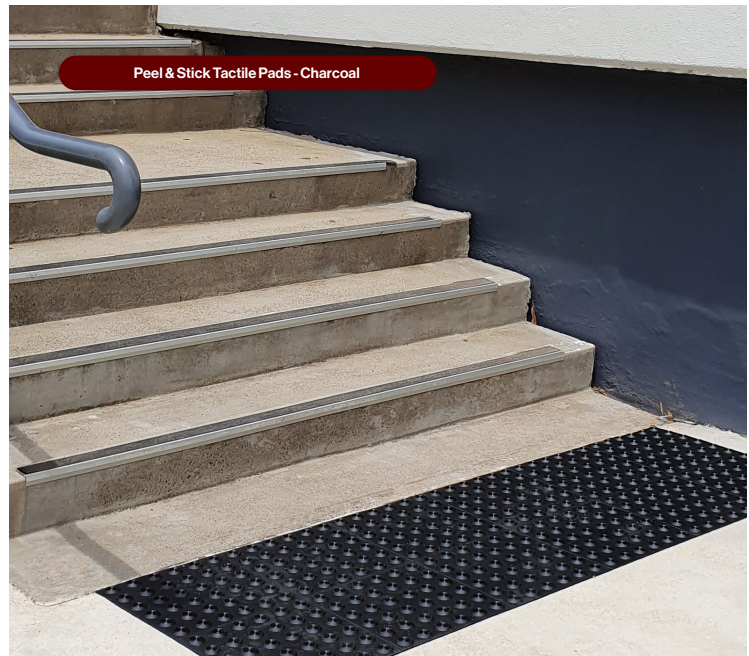


Peel and Stick Tactile Indicator Features

1. Hi-Vis safety yellow
2. Extra high-bond bituminous adhesive backing
3. Peel and stick backing for fast, easy install
4. 3 colour options
5. Australian Standard Compliant
6. Australian Made
7. P5 anti-slip rating



Stainless Steel Tactile Pads (See Page 153)



Peel & Stick Tactile Pads - Charcoal



Peel & Stick Tactile Pads - Yellow



Stainless Steel Tactile Plates (See Page 153)

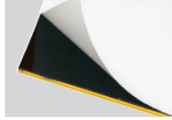
MATTING, RAMPS & TACTILES

Tactile Indicators

Tactiles - Acrylic - Peel and Stick



- Size: 300mm x 300mm
- Fast, easy installation - saves on labour
- Can be walked on immediately
- Suitable for indoor and outdoor applications.
- Complies to AS/NZS 4586 for slip resistance. R12.
- Complies to AS/NZS 1428.4.1:2009 for tactiles for vision impaired.
- Colours: Yellow, Charcoal (black), Light Grey
- P5 anti-slip rating

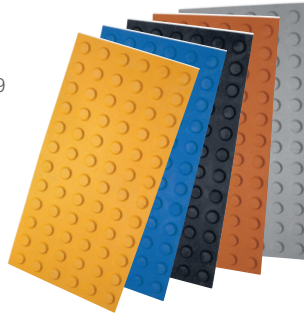


✓ Tactiles are GST Free

code	1-19	20-49	50-99	100+
As shown top right	\$42.90 / ea	\$36.90 / ea	\$33.90 / ea	\$28.90 / ea

Tactile Pad Rubber

- Complies with AS/NZS 1428.4.1:2009
- Size: 600 x 300mm
- Stock colours: Yellow, Black, Grey, Terracotta & Ocean Blue
- P5 anti-slip rating
- Requires epoxy



✓ Tactiles are GST Free

code	description	1-19	20+
40-RCTT-Y	Tactile Pad - Yellow	\$68.90 / ea	\$59.50 / ea
40-RCTT-B	Tactile Pad - Black	\$68.90 / ea	\$59.50 / ea
40-RCTT-G	Tactile Pad - Grey	\$68.90 / ea	\$59.50 / ea
40-RCTT-T	Tactile Pad - Terracotta	\$68.90 / ea	\$59.50 / ea
40-RCTT-OB	Tactile Pad - Ocean Blue	\$68.90 / ea	\$59.50 / ea

Tactile Plate Fibreglass

- Material: UV Stabilised resin / reinforced embedded fibreglass
- P5/R12 Slip Rating
- Hazard or Directional
- Colours: Yellow, Black or Ivory
- Fixing Method: Plugged, Screwed and glued (Fixings included)
- Complies with AS1428.1-2009
- Size: 600x300x2mm

✓ Tactiles are GST Free

code	description	1-19	20+
40-FCTT-DB	Directional Black	\$69.90 / ea	\$63.90 / ea
40-FCTT-DY	Directional Yellow	\$69.90 / ea	\$63.90 / ea
40-FCTT-DW	Directional Ivory	\$69.90 / ea	\$63.90 / ea
40-FCTT-HB	Hazard Black	\$69.90 / ea	\$63.90 / ea
40-FCTT-HY	Hazard Yellow	\$69.90 / ea	\$63.90 / ea
40-FCTT-HW	Hazard Ivory	\$69.90 / ea	\$63.90 / ea

Directional Tiles

40-ACTT-DY

40-ACTT-DC

Hazard Tiles

40-ACTT-G

40-ACTT-C

40-ACTT-Y

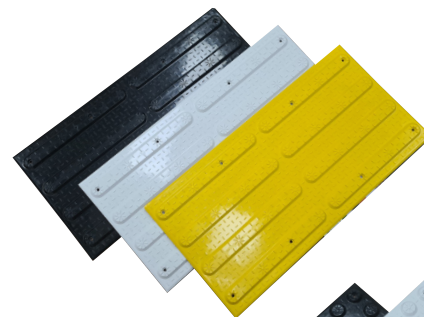
Two Part Tactile Epoxy 5kg

- The correct adhesive for applying pads to concrete, asphalt, timber, ceramic tiles, steel etc
- Coverage: 25-35 Tactile Pads (300 x 600mm)

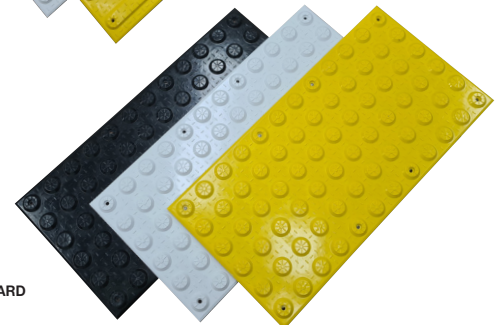


*GST applies to epoxy

code	1+
40-RCTTG-5	\$159.00 / ea



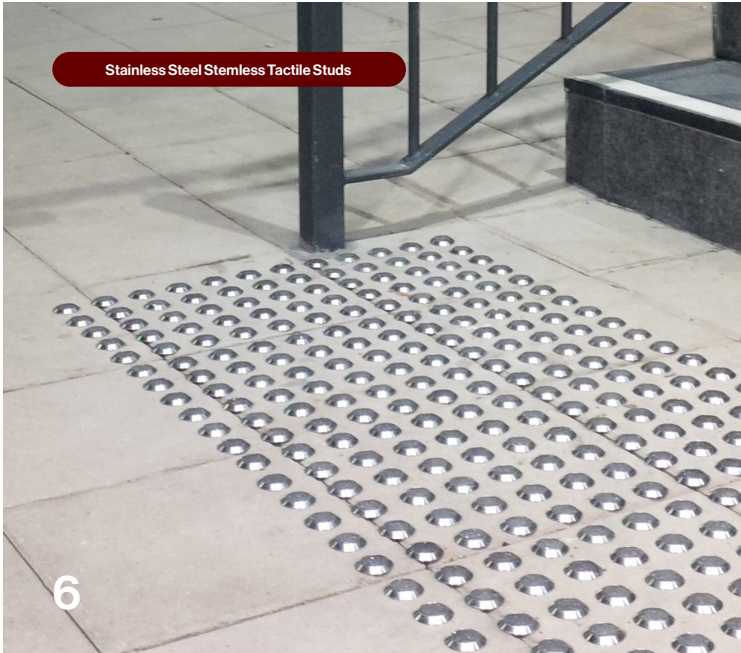
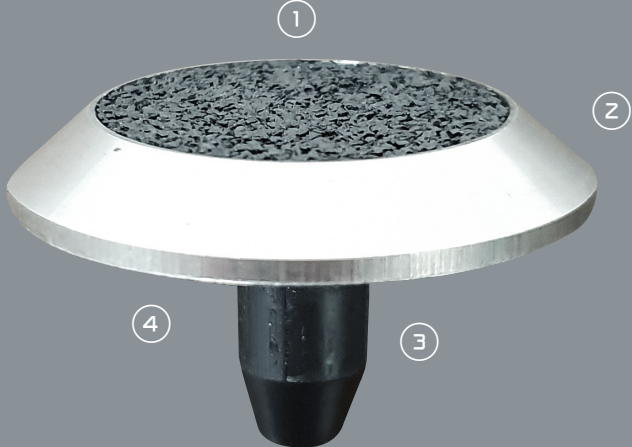
DIRECTIONAL



HAZARD

Pressure Fit Tactile Indicator Features

- 1. Grit top P5 slip rating
- 2. 316 grade stainless steel
- 3. Unique pressure fit stem
- 4. Australian Standards compliant



MATTING, RAMPS & TACTILES

Tactile Indicators

Tactile Studs Stainless Steel

- Complies with AS/NZS 1428.4.1:2009
- 400 studs per m²
- P4 anti-slip rating (Grit infill is P5)



✓ Tactiles are GST Free

code	description	10-400	410-2000	2010+
40-SSDC	SS Pressure-Fit	\$5.90/ea	\$4.99/ea	\$3.95/ea
40-SSL	SS Stemless	\$5.90/ea	\$4.99/ea	\$3.95/ea
40-SSSO	SS Screw On	\$5.90/ea	\$4.99/ea	\$3.95/ea
40-SSBG	SS Black Grit Infill	\$5.90/ea	\$4.99/ea	\$3.95/ea

Tactile Studs Poly

- Complies with Australian and NZ standards 1428.4.1:2009
- Developed from a mix of polymers to guarantee long lasting
- UV stable
- Patent DIY Drill and Lock Technology, thus no adhesive required
- Supplied in packs of 100
- P4 anti-slip rating



✓ Tactiles are GST Free

code	colour	1-4	5+
40-PSD-Y	Yellow	\$115.00/pk 100	\$99.00/pk 100
40-PSD-G	Grey	\$115.00/pk 100	\$99.00/pk 100
40-PSD-B	Black	\$115.00/pk 100	\$99.00/pk 100
40-PSD-T	Terracotta	\$115.00/pk 100	\$99.00/pk 100



Tactile Positioning Template

- Australian standards — 400 studs per m²
- Holes to suit each type of tactile stud
- Size: 1200(L) x 600(W)mm

✓ GST applies to the template, but not to tactiles

code	description	20+
40-PSD-TEMP	(Specify which tactile)	\$149.00/ea



Tactile Plates Stainless Steel

- Size: 300 x 600mm
- Australian standards — 400 studs per m²
- Holes to suit each type of tactile stud
- Weight per plate: 4.2kg
- Peel and stick adhesive backing
- Indoor/outdoor use
- *Screw fixing option also available - please enquire.

code	colour	price 1+	price 6+
40-SSTP63	Tactile Plates - Stainless Steel (300 x 600mm)	\$479.00/ea	\$419.00/ea



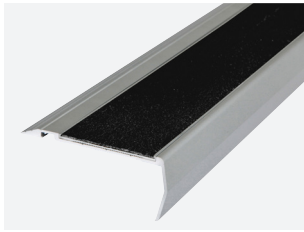
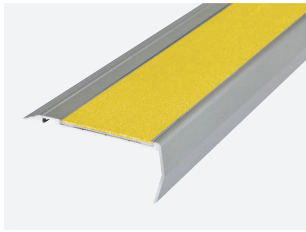
Tactile Plates Grit Top Stainless Steel

- Insert Slip Rating: R13
- Code Compliance: AS1428.1-2009
- Fixing Method: Adhesive or Mechanical
- Suitable for external or internal use
- Comes with self-adhesive backing for easy installation
- Size: 300 x 600mm

code	description	1+	6+
40-SSGTP	Tactile Plates - Grit Top Stainless Steel (300x600mm)	\$499.00/ea	\$459.00/ea



Stair Nosing



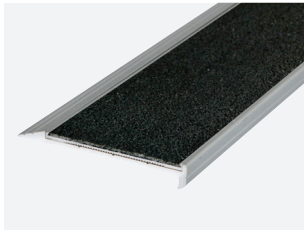
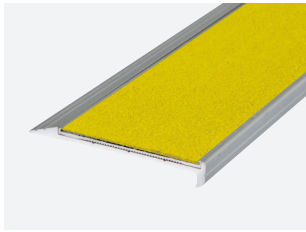
Epoxy Full Bar Anti-Slip Nosing 200 Series

- P5 anti-slip rating
- AS 1428.1-2009
- Insert: Epoxy Full Bar

210 Profile - 85(W) x 35(H)mm

code	description	5+
27-SMN210B	Black - Cut to order	\$74.90 / mtr
27-SMN210Y	Yellow - Cut to order	\$74.90 / mtr

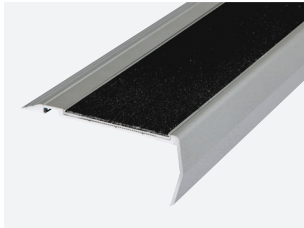
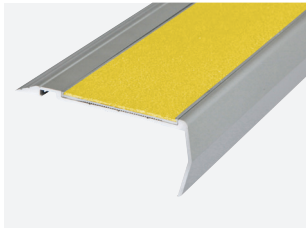
* Small order set up charge is \$25.00 +GST for 10m or less.



212 Profile - 68(W) x 10(H)mm

code	description	5+
27-SMN212B	Black - Cut to order	\$74.90 / mtr
27-SMN212Y	Yellow - Cut to order	\$74.90 / mtr

* Small order set up charge is \$25.00 +GST for 10m or less.



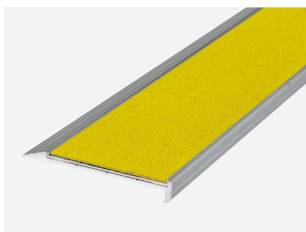
Carborundum Anti-Slip Nosing 400 Series

- P5 anti-slip rating
- AS 1428.1-2009
- Insert: Carborundum

410 Profile - 85(W) x 35(H)mm

code	description	1+
27-SMN410B	Black - Cut to order	\$59.90 / mtr
27-SMN410Y	Yellow - Cut to order	\$59.90 / mtr

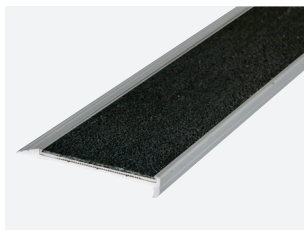
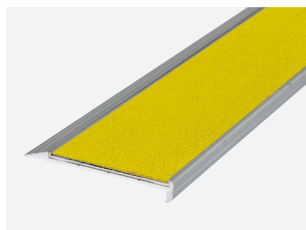
* Small order set up charge is \$25.00 +GST for 10m or less.



412 Profile - 68(W) x 10(H)mm

code	description	1+
27-SMN412B	Black - Cut to order	\$59.90 / mtr
27-SMN412Y	Yellow - Cut to order	\$59.90 / mtr

* Small order set up charge is \$25.00 +GST for 10m or less.



NEW

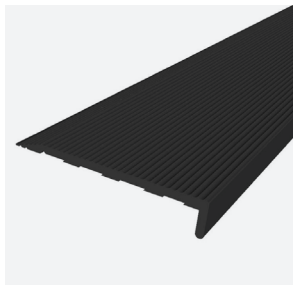
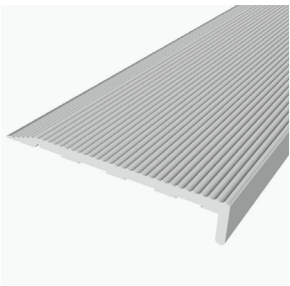
423 Profile - 65(W) x 10(H)mm

Note: No insert, must use adhesive to secure down.

code	description	1+
27-SMN423B	Black - Cut to order	\$42.90 / mtr
27-SMN423Y	Yellow - Cut to order	\$42.90 / mtr

* Small order set up charge is \$25.00 +GST for 10m or less.

Stair Nosing



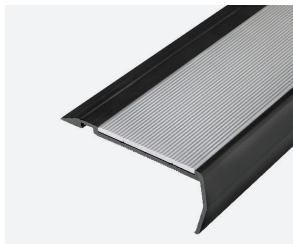
NEW

Plain Aluminium Stair Nosing

- Size: 55(W) x 10(H)mm
- Supplied cut to length
- Anodised finish — Clear or Black
- P4 anti-slip rating
- Use adhesive to secure down

code	description	1+
27-SMN723C	Clear Anodised Nosing	\$39.90 / mtr
27-SMN723B	Black Anodised Nosing	\$39.90 / mtr

* Small order set up charge is \$25.00 +GST for 10m or less.



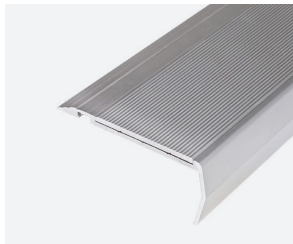
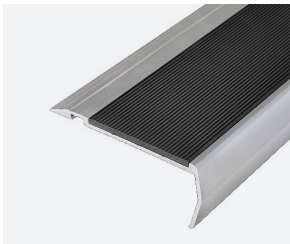
Ribbed Aluminium Anti-Slip Nosing 700 Series

- P4 anti-slip rating
- AS1428.1-2009
- Insert: Ribbed Aluminium

710 Profile: 85(W) x 35(H)mm

code	description	1+
27-SMN710CC	Clear Anodised Insert on Clear Anodised Nosing	\$55.90 / mtr
27-SMN710CB	Clear Anodised Insert on Black Anodised Nosing	\$55.90 / mtr
27-SMN710BB	Black Anodised Insert on Black Anodised Nosing	\$55.90 / mtr
27-SMN710BC	Black Anodised Insert on Clear Anodised Nosing	\$55.90 / mtr

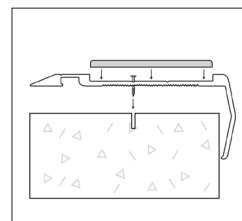
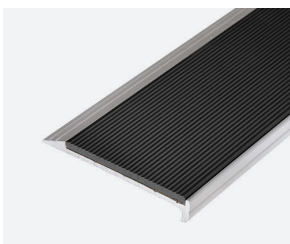
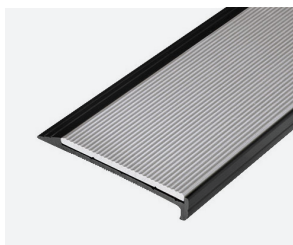
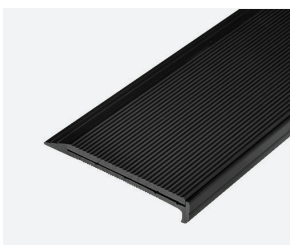
* Small order set up charge is \$25.00 +GST for 10m or less.



712 Profile: 68(W) x 10(H)mm

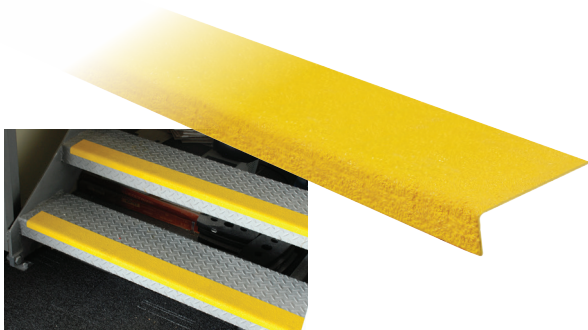
code	description	1+
27-SMN712CC	Clear Anodised Insert on Clear Anodised Nosing	\$55.90 / mtr
27-SMN712CB	Clear Anodised Insert on Black Anodised Nosing	\$55.90 / mtr
27-SMN712BB	Black Anodised Insert on Black Anodised Nosing	\$55.90 / mtr
27-SMN712BC	Black Anodised Insert on Clear Anodised Nosing	\$55.90 / mtr

* Small order set up charge is \$25.00 +GST for 10m or less.



Typical Stair Nosing Installation Diagram

Anti-Slip Nosing, Plates & Tapes



Grit Topped Stair Nosing

- Size: 80(W) x 20(H)mm
- Supplied cut to length (maximum 2m long)
- Colours: Safety Yellow or Black

✓ R12 Anti-slip rating

code	description	1+
27-GT80	(Specify colour)	\$72.90 / mtr

* Small order set up charge is \$25.00 +GST for 10m or less.



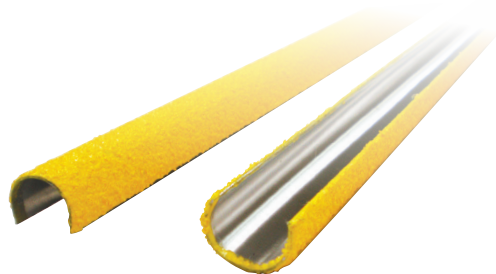
Grit Topped Ramp Plates

- Size: 100mm wide
- Supplied cut to length (maximum 2m long)
- Colours: Safety Yellow or Black

✓ R12 Anti-slip rating

code	description	1+
27-GT100	(Specify colour)	\$72.90 / mtr

* Small order set up charge is \$25.00 +GST for 10m or less.



Anti Slip Ladder Rung Covers

- Colour: Safety Yellow

✓ R12 Anti-slip rating

code	description	1-19	20+
27-LRC35	20(D) x 350 (L)mm	\$49.90 / ea	\$44.70 / ea
27-LRC45	20(D) x 450 (L)mm	\$54.80 / ea	\$49.50 / ea

* Small order set up charge is \$25.00 +GST for 10 Pieces or less.



Anti-Slip Stair Tape 50mm

- P5 anti-slip rating (Grit 60 slip resistance)
- Size: 18m rolls
- Colour: Black, Yellow or Black/Yellow Hazard

✓ P5 Anti-slip rating

code	description	1-9	10+
27-AS18-50	(Specify colour)	\$56.90 / roll	\$49.90 / roll

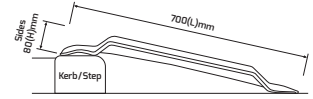
Ramps and Trench Covers



Underside

Large Kerb Ramp Portable

- Steel reinforced HDPE
- Size: 1300(W) x 700(L) x 80(H)mm
- Width between sides: 1200mm
- Weight - only 13kg
- Load Capacity: 250kg



code	1-4	5+
38-KRRA	\$299.00 / ea	\$259.00 / ea



Underneath

Small Kerb Ramp Portable

- Engineered HDPE
- Size: 690(W) x 690(L) x 100(H)mm
- Width between sides: 610mm
- Weight - only 4kg



code	1-4	5+
38-KRN	\$95.00 / ea	\$79.00 / ea



Underneath

Safety Trench Covers

- Steel reinforced HDPE
- Anti-slip surface
- Bevelled edges
- Pedestrian use only

code	description	1-5	6+
38-STC1280	1200x800mm	\$225.00 / ea	\$199.00 / ea

Entrance Matting



Custom Logo Entrance Mats

- Nylon plush pile surface
- Nitrile rubber backing remains supple.
- Indoor / Outdoor
- Machine washable
- Thickness: 7mm
- Sizes: 600 x 900mm
900 x 1500mm
1200 x 1800mm
1200 x 2400mm
- Custom sizes also available.

code	1+
CUS-MATTING	\$POA/ ea



Red



Blue

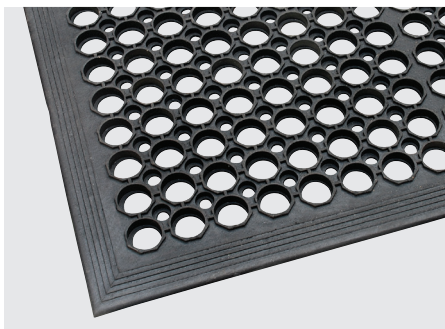


Smoke

Carpet Runners

- Colours: Red, Blue, Smoke
- Plush pile
- Anti-slip PVC backing
- Solution dyed anti-fade
- 6mm thickness

code	description	colour	1+
25-RCR123	1200mm x 3m roll Fully Edged	Red	\$975.00/ ea
25-RCR126	1200mm x 6m roll	Red	\$1,860.00/ ea
25-RCR1212	1200mm x 12m roll	Red	\$3,390.00/ ea
25-BCR123	1200mm x 3m roll Fully Edged	Blue	\$975.00/ ea
25-BCR126	1200mm x 6m roll	Blue	\$1,860.00/ ea
25-BCR1212	1200mm x 12m roll	Blue	\$3,390.00/ ea
25-SCR123	1200mm x 3m roll Fully Edged	Smoke	\$975.00/ ea
25-SCR126	1200mm x 6m roll	Smoke	\$1,860.00/ ea
25-SCR1212	1200mm x 12m roll	Smoke	\$3,390.00/ ea

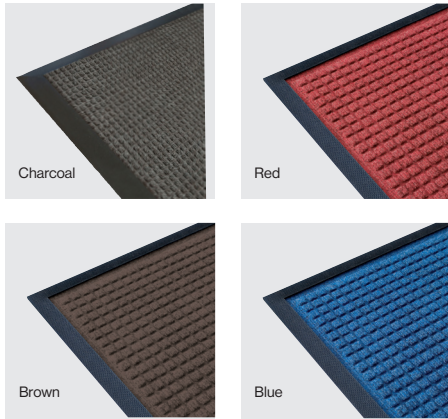


Safety Cushion Matting

- Anti-fatigue
- Anti-slip
- For wet & dry areas
- Thickness: 12mm

code	description	1-9	10+
25-SC69	600 x 900mm	\$66.90/ ea	\$58.90/ ea
25-SC915	900 x 1500mm	\$115.00/ ea	\$96.90/ ea

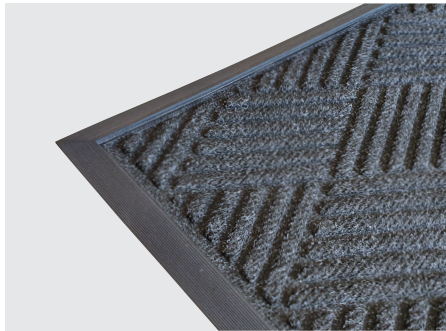
Entrance Matting



Heavy Duty Rubber Backed Entrance Mats

- High traffic premium grade
- Indoor/Outdoor
- 8mm thickness

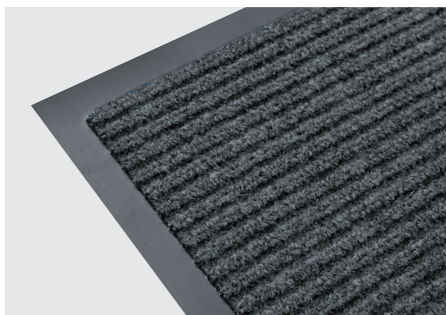
code	description	charcoal	other colours
25-AB46	1140x1690mm	N/A	\$1,190.00 / ea
25-AB46-P	1200x1800mm	\$799.00 / ea	N/A
25-AB410	1140x2970mm	N/A	\$1,849.00 / ea
25-AB410-P	1200x3000mm	\$1,340.00 / ea	N/A
25-AB610	1750x2920mm	N/A	\$2,990.00 / ea
25-AB610-P	1800x3000mm	\$1,899.00 / ea	N/A
25-AB620	1800x6045mm	\$3,550.00 / ea	N/A



Rubber Backed Entrance Matting

- High traffic
- Indoor/Outdoor
- Colour: Charcoal
- 8mm thickness

code	description	1+
25-EM69-C	600x900mm	\$135.00 / ea
25-EM915-C	900x1500mm	\$395.00 / ea
25-EM1218-C	1200x1800mm	\$589.00 / ea



Ribbed Carpet Mats

- Vinyl backed general purpose
- Indoor use
- Colour: Charcoal
- 7mm thickness

code	description	1+
25-RM69	600x900mm	\$115.00 / ea
25-RM915	900x1500mm	\$195.00 / ea
25-RM1218	1200x1800mm	\$289.00 / ea

Reflective Kerb Ramp Features



1. Reflective triangles for safety & visibility
2. 3 heights for most kerb sizes
3. Heavy vehicle compatible
4. Premium recycled rubber — long lasting
5. Anti-slip grooves & reflectors
6. 2 cable or stormwater channels



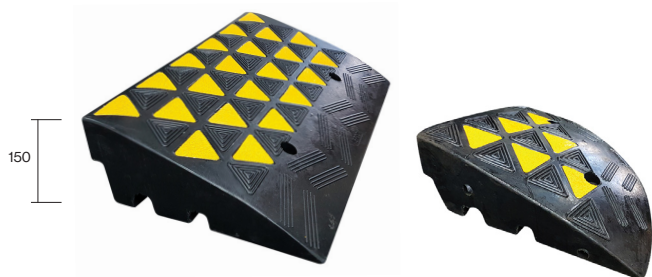
Kerb Ramps



Reflective Kerb Ramp (100mm High)

- Centre modules: 600(L) x 300(D) x 100(H)mm
- End module: 300(L) x 300(D) x 100(H)mm

code	description	1+
38-RKRM10	Centre Module	\$94.00 / ea
38-RKRE10	End Module	\$59.00 / ea
38-RKRFC	Fastener Set - M14 x 75mm Plug & Coach Screw - Set of 2	\$6.00 / Kit



Reflective Kerb Ramp (150mm High)

- Centre modules: 600(L) x 360(D) x 150(H)mm
- End module: 360(L) x 360(D) x 150(H)mm

code	description	1+
38-RKRM15	Centre Module	\$125.00 / ea
38-RKRE15	End Module	\$79.00 / ea
38-RKRFC	Fastener Set - M14 x 75mm Plug & Coach Screw - Set of 2	\$6.00 / Kit



Reflective Kerb Ramp (200mm High)

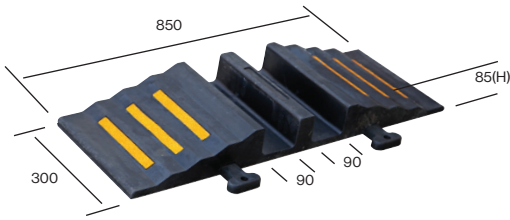
- Centre modules: 600(L) x 450(D) x 200(H)mm
- End module: 450(L) x 450(D) x 200(H)mm

code	description	1+
38-RKRM20	Centre Module	\$189.00 / ea
38-RKRE20	End Module	\$119.00 / ea
38-RKRFC	Fastener Set - M14 x 75mm Plug & Coach Screw - Set of 2	\$6.00 / Kit

Vehicle Cable Covers

Rubber Channel Hose Ramp Medium

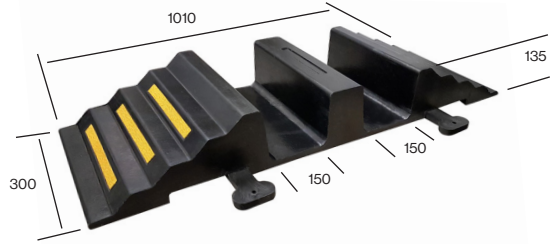
- Suits hose up to 90mm
- Weight: 12kg



code	1+
38-RHR-M	\$129.00 / ea

Rubber Channel Hose Ramp Large

- Suits hose up to 150mm
- Weight: 22kg



code	1+
38-RHR-L	\$189.00 / ea

Flip Top Cable Cover Small Flip Top Cable Cover - Large

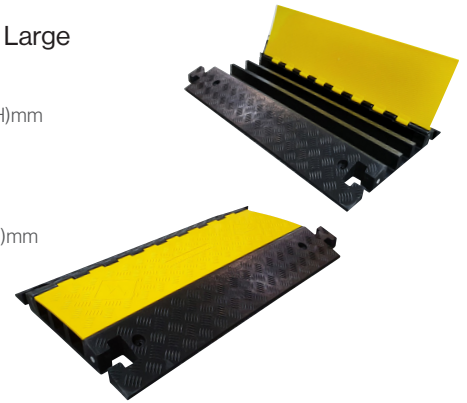
- Size: 1000(L) x 250(W) x 45(H)mm
- 2 Cable channels - 30 x 30mm each
- Weight: 7.5kg



code	1-9	10+
33-CABC-S	\$99.00 / ea	\$89.00 / ea

Flip Top Cable Cover Large

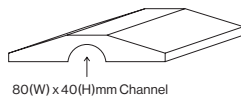
- 3 Channel**
 - Size: 900(L) x 600(W) x 75(H)mm
 - Channel Size: 60 x 50mm
 - Weight: 19kg
- 5 Channel**
 - Size: 915(L) x 500(W) x 60(H)mm
 - Channel Size: 35 x 35mm
 - Weight: 19kg



code	description	1-9	10+
33-CABC	3-Channel	\$175.00 / ea	\$159.00 / ea
33-CABC-5C	5-Channel	\$199.00 / ea	\$169.00 / ea

40mm Cable/Hose Drop Over Humps

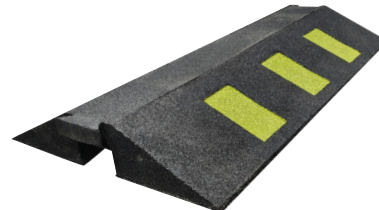
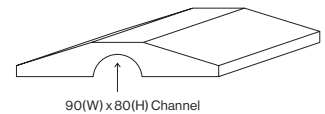
- Size: 1000(L) x 350(W) x 75(H)mm
- Weight: 12kg



code	1-5	6+
33-CHH-84	\$299.00 / ea	\$275.00 / ea

80mm Cable/Hose Drop Over Humps

- Size: 1000(L) x 550(W) x 110(H)mm
- Weight: 22kg



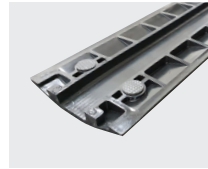
code	1-5	6+
33-CPR8	\$419.00 / ea	\$389.00 / ea

Pedestrian Cable Covers



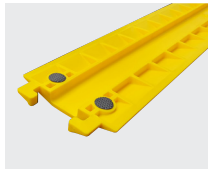
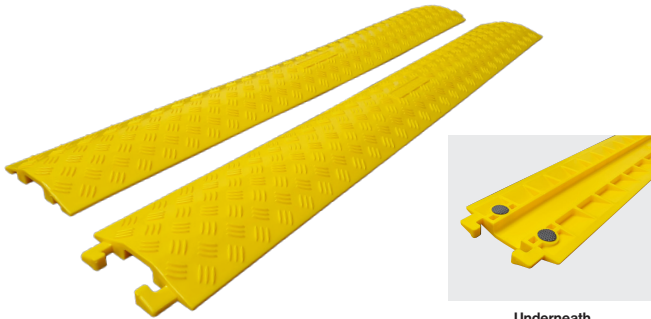
Single Channel Drop Over Cable Cover Black

- Size: 1000(L) x 133(W) x 20(H)mm
- Channel: 38(W) x 12.7(H)mm



Underneath

code	1-5	6+
33-DOCG-B	\$39.00/ea	\$33.00/ea

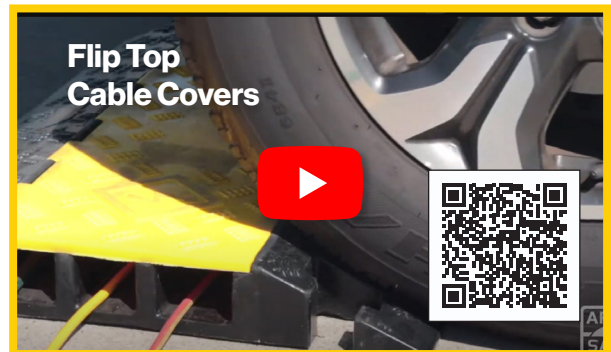


Underneath

Single Channel Drop Over Cable Cover Yellow

- Size: 1000(L) x 133(W) x 20(H)mm
- Channel: 38(W) x 12.7(H)mm

code	1-5	6+
33-DOCG-Y	\$39.00/ea	\$33.00/ea



Skate Deterrents

Stainless Steel Bullnose

- Size: 120(L) x 16(W) x 12(H)mm
- Stem: Ø6x 30(L)mm



code	1-4	5+
42-SK8N-BN	\$229.00 / 10pk	\$209.00 / 10pk

Mushroom Stud

- Size: Ø20x 10(H)mm
- Stem: M6 x 40(L)mm with nut
- Remove the nut to use the threaded spigot for epoxying into a hole in a concrete wall



code	1-4	5+
42-SK8M-BO	\$119.00 / 10pk	\$105.00 / 10pk

Stainless Steel Blade

- Size: 100(L) x 60(H) x 4(T)mm



code	1-4	5+
42-SK8-BR	\$199.00 / 10pk	\$189.00 / 10pk

Handrail Anti-Skate Bar

- Profiled to fit round or flat hand rails
- Security screws supplied*
- Size: 60(L) x 12(W) x 8(H)mm
- Also suitable for low walls and seats



*Some hand rail materials may require fixings by others

code	1+
42-SK8-HR	\$149.00 / 10pk

Large Dome Stud

- Size: Ø30x 30(H)mm
- Stem: Ø6 x 30(L)mm



code	1-4	5+
42-ASD	\$179.00 / 10pk	\$169.00 / 10pk

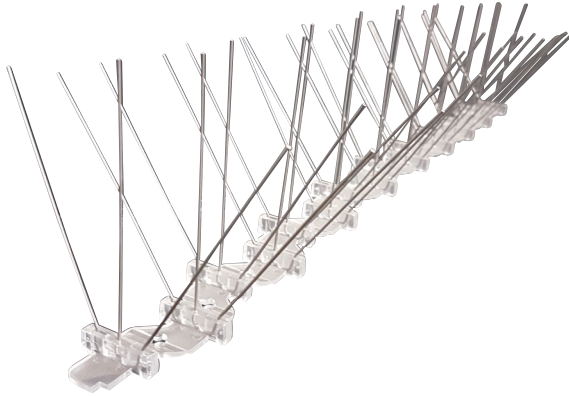
Tapered Stud

- Size: Ø20x 30(H)mm
- Stem: Ø6x 30(L)mm



code	1-4	5+
42-ASST	\$179.00 / 10pk	\$169.00 / 10pk

Bird Spikes & Umbrella Wrappers



Bird Deterrent Spikes Triple

- Size: 600(L)x150(W)x115(H)mm, Base 50(W)mm
- 25 lengths per carton = 15Lm

code	5-24	25-100	101+
43-BS60	\$15.50 / length	\$13.90 / length	\$11.90 / length



Bio-Degradable Poly Bags

Wet Umbrella Bag Dispenser

- Weight: 14kg
- Size: 305 x 460 x 780mm
- Bio-Degradable Poly Bags

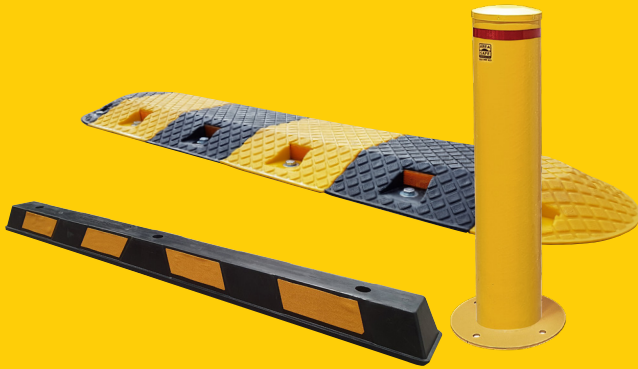
code	description	1-5	6+
34-WU2-SS	Double Bag Dispenser	\$649.00 / ea	\$599.00 / ea
34-WUB-L	Poly Bags - Long 130 x 700mm - 1000/pk	\$229.00 / pk	\$199.00 / pk
34-WUB-S	Poly Bags - Short 130 x 400mm - 1000/pk	\$229.00 / pk	\$199.00 / pk

Entrance Matting

See Pages 158-159



Other Area Safe Categories



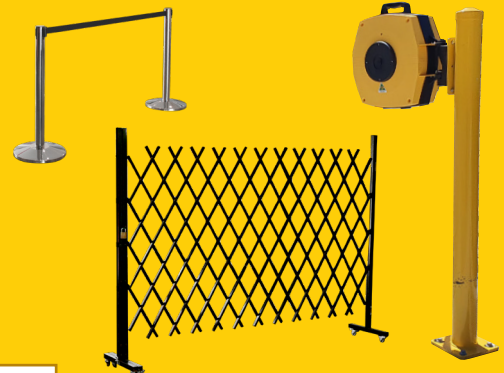
Carpark Protection



Signage & Safety



Industrial Safety



Pedestrian Barriers



www.areasafe.com.au



Email: sales@areasafe.com.au

Mail: PO Box 82, Plumpton NSW 2761

Address: 17 Sterling Road, Minchinbury NSW 2770

Hours: Open from 7:00am - 5:00pm, Monday to Friday